



NEW!

INPUT: 100A...
5000A

OUTPUT: 5A

Sistema di chiusura a scatto!
Snap closing system!

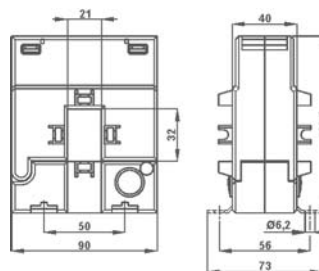
DATI TECNICI - Technical data

custodia in materiale termoplastico autoestinguente	self extinguishing thermoplastic material	UL94-V0
frequenza funzionamento	operating frequency	50÷60 Hz
tensione di riferimento per l'isolamento	insulation reference voltage	0,72 kV
tensione di prova	test voltage	3 kV x 1'50 Hz
isolamento	insulation	classe E
grado di protezione	protection degree	IP 20
sovracorrente permanente	continuous overcurrent	1,2 I _n
corrente termica di breve durata nominale (I _{th})	rated short-time thermal current (I _{th})	60 I _n
corrente dinamica nominale (I _{dyn})	rated dynamic current (I _{dyn})	2,5 x I _{th}
fattore di sicurezza	safety factor	N ≤ 5
temperatura di funzionamento	operating temperature	-25 +50 °C
temperatura di magazzino	storage temperature	-20 +80 °C
costruzione a norme	manufactured according to	IEC/EN 61869-1 IEC/EN 61869-2
terminali secondari integrati	integrated secondary terminals	6mm ²
coprimorsetti sigillabili	sealable terminals covers	integrati/integrated

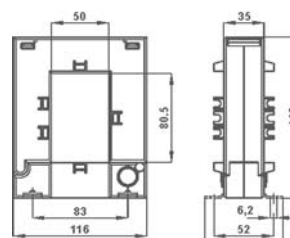
TIPO - Type

DIMENSIONI - Dimensions

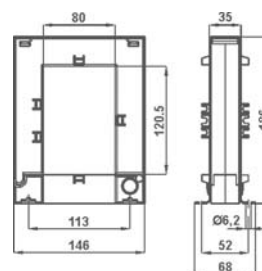
Tipo Type	Rapporto Ratio	Cl.			Codice - Code
		0,5 VA	1 VA	3 VA	
TAA032 21x32	100/5A			1.5	TAA032100X05
	150/5A			1.5	TAA032150X05
	200/5A		1	2	TAA032200X05
	250/5A	1	2.5	4	TAA032250X05
	300/5A	1	2.5	4	TAA032300X05
	400/5A	1	3.75	6	TAA032400X05
TAA082 50x81	250/5A	1	5		TAA082250X05
	400/5A	1	5		TAA082400X05
	500/5A	1.5	6		TAA082500X05
	600/5A	3	7.5		TAA082600X05
	800/5A	4	10		TAA082800X05
	1000/5A	5	10		TAA0821K0X05
TAA122 80,5x120	800/5A	3	6		TAA122800X05
	1000/5A	5	8		TAA1221K0X05
	1200/5A	5	10		TAA1221K2X05
	1500/5A	7.5	10		TAA1221K5X05
TAA162 80,5x161	1000/5A	6	10		TAA1621K0X05
	1500/5A	8	10		TAA1621K5X05
	2000/5A	10	15		TAA1622K0X05
	2500/5A	10	20		TAA1622K5X05
	3000/5A	20	25		TAA1623K0X05
	4000/5A	20	25		TAA1624K0X05
	5000/5A	20	25		TAA1625K0X05



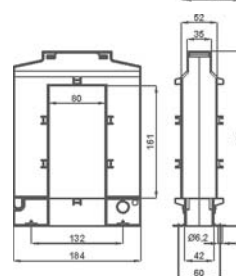
TAA032 - kg 0,75



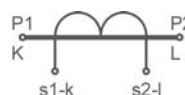
TAA082 - kg 1,1



TAA122 - kg 1,4



TAA162 - kg 3,15



Siglatura morsetti primario e secondario
Primary and secondary connections marking